

# Helping Our Suppliers Manage Ethics and Security Risks

PIRA #CHQ2023030023



# Presenting Today



PIRA #CHQ2023030023



# Why Does LM Want to Help Suppliers Manage Risk?



LM suppliers may be targeted by adversaries

---



Emerging Supply Chain Risk Management (SCRM) requirements

---



Risks to suppliers are risks to LM

---

# The Importance of a Security and Insider Threat Program

---

# Counterintelligence

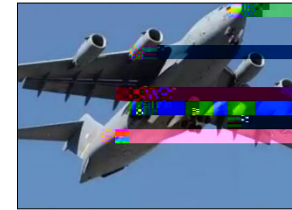
## What is it?

- The practice of identifying intelligence threats facing an organization and developing mitigation strategies to counter (address and neutralize) those threats.

## Why is it important?

- Trust, Reliability, National Security
- Adversaries are targeting the US Defense sector and global supply base

US Tech



Foreign Clones



DETER – DETECT - MITIGATE

PIRA #CHQ2023030023







# Targeted Information

Proprietary Information

Third Party Proprietary Information

Marketing strategies

Investment data

Anything legitimately NOT publicly available

PIRA #CHQ2023030023



# **The Importance of an Ethics & Compliance Program**

---





# Compliance with the Supplier Code of Conduct



**We expect that all of our suppliers will adhere to the provisions of the Supplier Code of Conduct.**

# What's in the Supplier Code of Conduct?



Bribery & Corruption



Gifts & Business Courtesies

Fair Competition



Conflicts of Interest



Export/Import



Counterfeit Parts



Human Rights

Protecting Information



Financial Records



Human Trafficking & Child Labor

Non-Discrimination



Conflict Minerals



Environment

Harassment



Drug-Free Workplace



Reporting

Supplier Diversity

Codes of Conduct & Sub-Tier Suppliers

Employee Safety & Health

Could your company use some guidance in meeting these expectations?









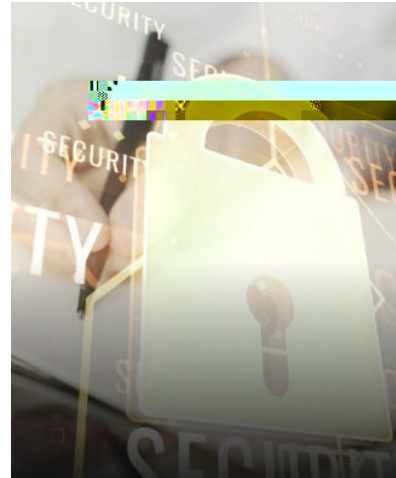
\_\_\_\_\_



# Ask Lockheed Martin for Help!



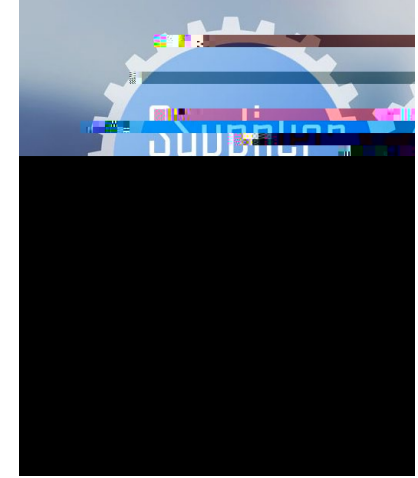
Training and Awareness Materials



Supplier Security Liaison Program (SSLP)



Supplier Code of Conduct



Supplier Ethics Mentoring

Partnership Mentality

PIRA #CHQ2023030023

***LOCKHEED MARTIN***